

McADAMS

The John R. McAdams Company, Inc.
621 Hillsborough Street, Suite 500
Raleigh, NC 27603

phone 919. 361. 5000
fax 919. 361. 2269
TN license number: 8829

www.mcadamsco.com

CLIENT

EXPRESS OIL CHANGE AND TIRE ENGINEERS
1880 SOUTH PARK DRIVE
BIRMINGHAM, ALABAMA 35244
PHONE: 205. 397. 1164



EXPRESS OIL - MANCHESTER
CONSTRUCTION PLANS
2569 HILLSBOROUGH BOULEVARD
MANCHESTER, TN

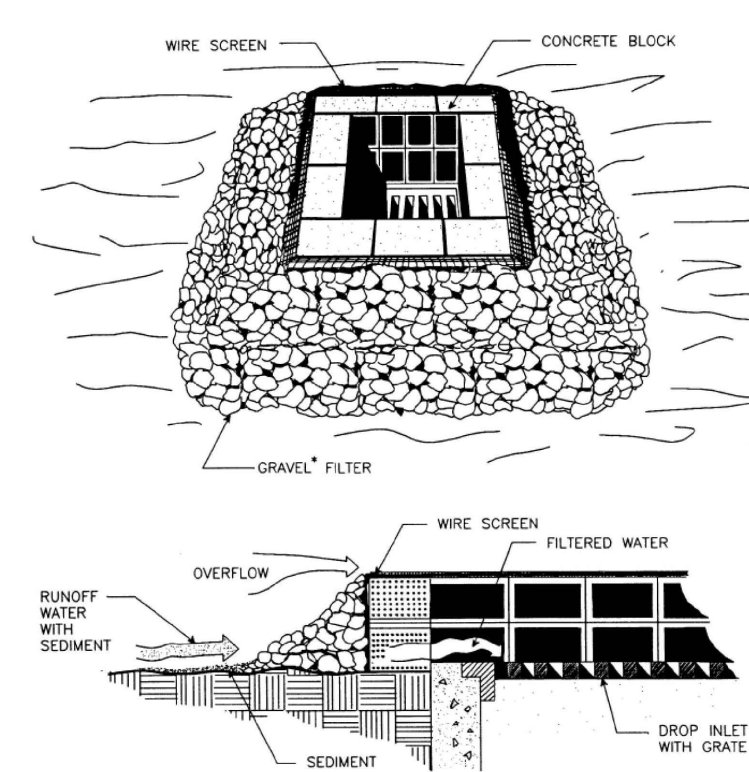
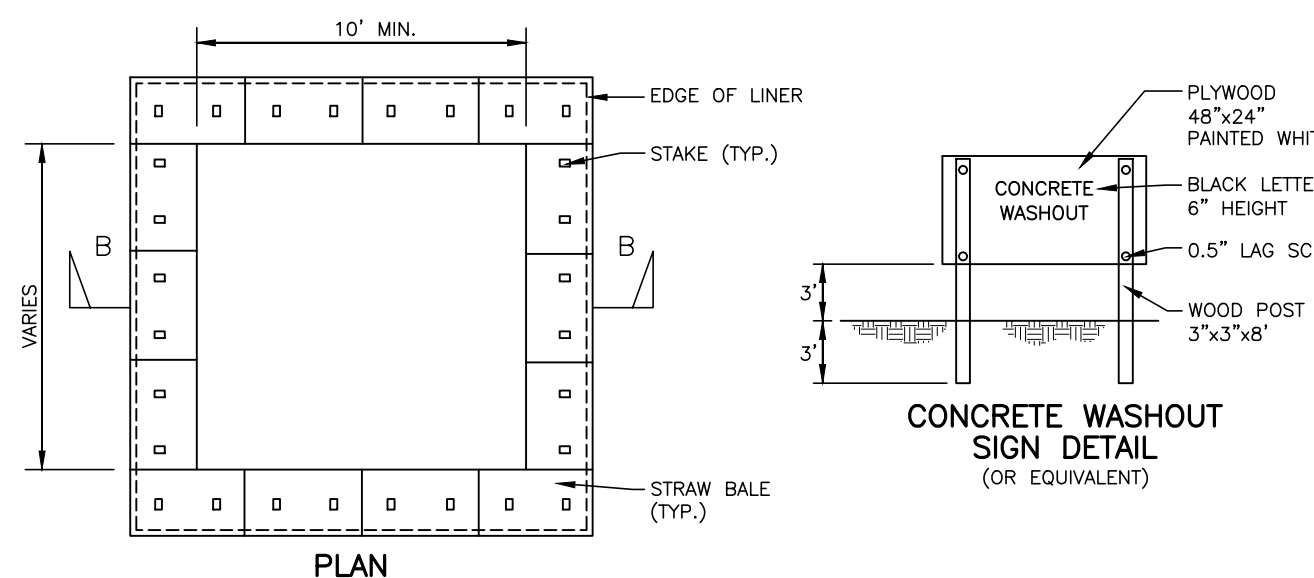
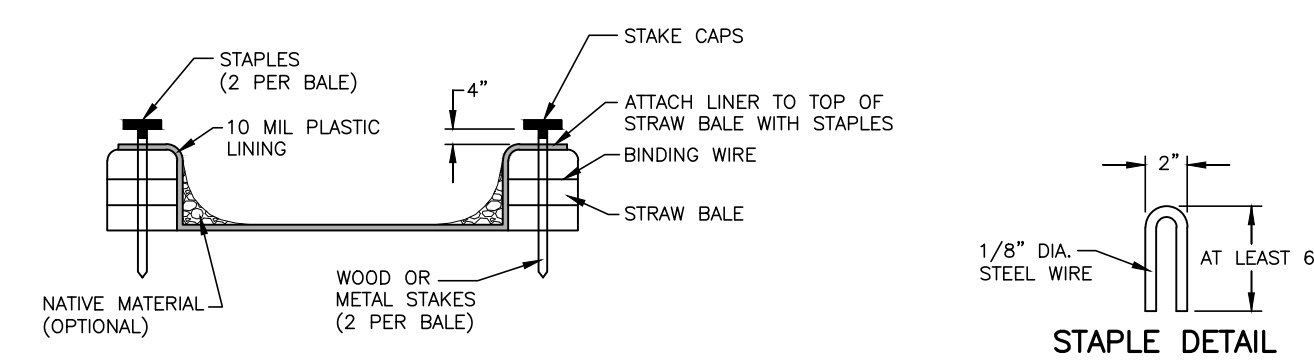


Figure 7.35-3 Block and Gravel Inlet Protection (Source: V-1 DSWC)

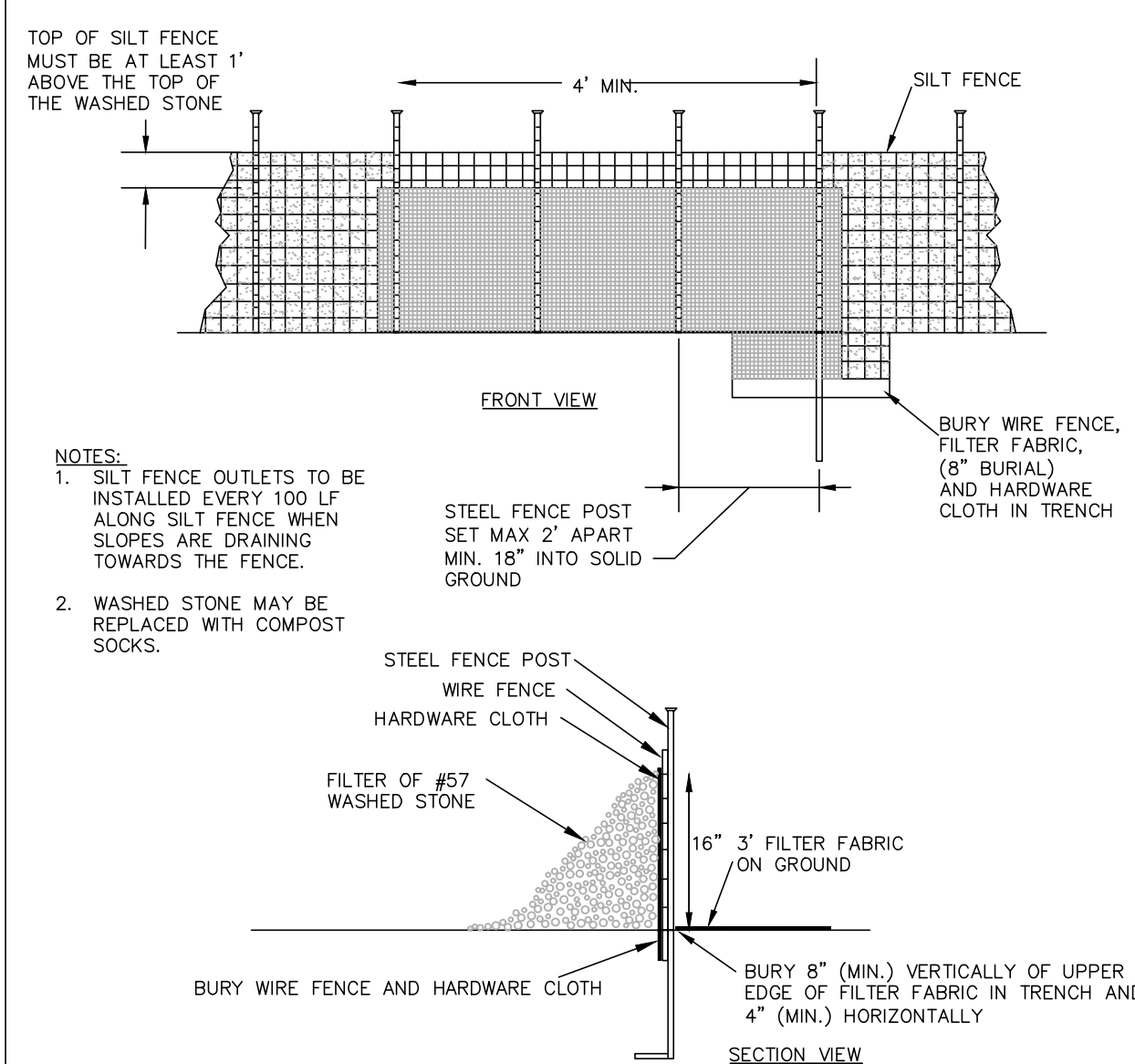


NOTES:
1. ACTUAL LAYOUT DETERMINED IN THE FIELD.
2. THE CONCRETE WASHOUT SIGN SHALL BE INSTALLED WITHIN 30 FEET OF THE TEMPORARY CONCRETE WASHOUT FACILITY.

- INSPECTION/MAINTENANCE/REMOVAL:**
1. TEMPORARY CONCRETE WASHOUT FACILITIES ARE TO BE INSPECTED BY THE CONTRACTOR DURING HIS/HER WEEKLY EROSION AND SEDIMENT CONTROL INSPECTION, AFTER A STORM EVENT OF 1/2" OR GREATER AND AT THE END OF ANY DAY WHEN CONCRETE HAS BEEN POURED ON THE CONSTRUCTION SITE. THE INSPECTOR IS TO ENSURE THAT THERE ARE NO LEAKS, NO SPILLS AND THAT THE FACILITIES CAPACITY HAS NOT YET BEEN COMPROMISED.
 2. ANY OVERFLOWING OF THE WASHOUT FACILITIES ONTO THE GROUND MUST BE CLEANED UP AND REMOVED WITHIN 24 HOURS OF DISCOVERY.
 3. IF A RAIN OR SNOW EVENT IS FORECASTED, A NON-COLLAPSING, NON-WATER COLLECTING COVER SHALL BE PLACED OVER THE WASHOUT FACILITY AND SECURED TO PREVENT ACCUMULATION AND OVERFLOW OF PRECIPITATION. CONTENTS OF EACH CONCRETE WASHOUT FACILITY ARE NOT TO EXCEED 75% OF ITS DESIGNED CAPACITY. IF THE CONTENTS REACH 75% CAPACITY, DISCONTINUE POURING CONCRETE INTO THE FACILITY UNTIL IT HAS BEEN CLEANED OUT.
 4. ALLOW SLURRY TO EVAPORATE OR REMOVE FROM SITE IN A SAFE MANNER (I.E. VACUUM TRUCK). ALL HARDENED MATERIAL CAN THEN BE REMOVED AND DISPOSED OF PROPERLY.
 5. IF A LINED BASIN IS USED, IMMEDIATELY REPLACE THE LINER IF IT BECOMES DAMAGED.
 6. REMOVE TEMPORARY CONCRETE WASHOUT FACILITIES WHEN THEY ARE NO LONGER NEEDED AND RESTORE THE DISTURBED AREAS TO THEIR ORIGINAL CONDITION.

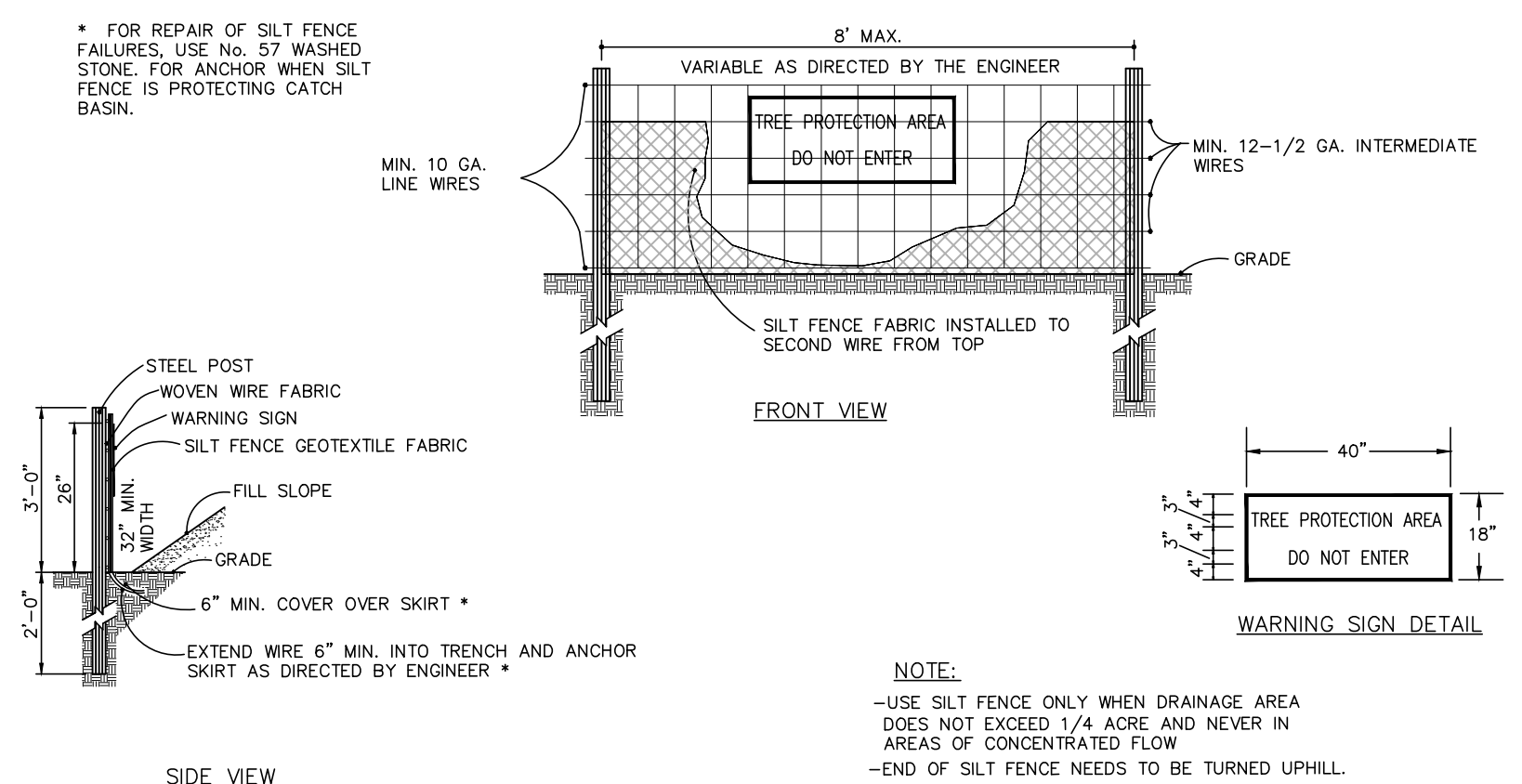


CONCRETE WASHOUT PIT
N.T.S.



NOTES:
1. SILT FENCE OUTLETS TO BE INSTALLED EVERY 100 LF ALONG SILT FENCE WHEN SLOPES ARE DRAINING TOWARDS THE FENCE.
2. WASHED STONE MAY BE REPLACED WITH COMPOST SOCKS.

STANDARD SILT FENCE OUTLET



NOTES:
WARNING SIGNS TO BE MADE OF DURABLE, WEATHERPROOF MATERIAL. LETTERS TO BE 3" HIGH MINIMUM, CLEARLY LEGIBLE AND SPACED AS DETAILED. SIGNS SHALL BE PLACED AT 50' MAXIMUM INTERVALS. PLACE A SIGN AT EACH END OF LINEAR TREE PROTECTION AND 50' ON CENTER THEREAFTER. FOR TREE PROTECTION AREAS LESS THAN 200' IN PERIMETER, PROVIDE NO LESS THAN ONE SIGN PER PROTECTION AREA. ATTACH SIGNS SECURELY TO FENCE POSTS AND FABRIC. MAINTAIN TREE PROTECTION FENCE THROUGHOUT DURATION OF PROJECT. ADDITIONAL SIGNS MAY BE REQUIRED BY CITY OF RALEIGH INSPECTIONS DEPARTMENT BASED ON ACTUAL FIELD CONDITIONS. PLACE A SIGN AT EACH END OF LINEAR TREE PROTECTION AND 50' ON CENTER THEREAFTER.

STANDARD TEMPORARY SILT / TREE PROTECTION FENCE

SILT FENCE OUTLET MAINTENANCE

- REMOVE SEDIMENT WHEN HALF OF STONE OUTLET IS COVERED.
- REPLACE STONE AS NEEDED TO ENSURE DEWATERING.
- INSPECT SEDIMENT FENCES AT LEAST ONCE A WEEK AND AFTER EACH RAINFALL. MAKE ANY REQUIRED REPAIRS IMMEDIATELY.
- SHOULD THE FABRIC OF A SEDIMENT FENCE COLLAPSE, TEAR, DECOMPOSE OR BECOME INEFFECTIVE, REPLACE IT PROMPTLY.
- REMOVE SEDIMENT DEPOSITS AS NECESSARY TO PROVIDE ADEQUATE STORAGE VOLUME FOR THE NEXT RAIN AND TO REDUCE PRESSURE ON THE FENCE. TAKE CARE TO AVOID UNDERMINING THE FENCE DURING CLEANOUT.
- REMOVE ALL FENCING MATERIALS AND UNSTABLE SEDIMENT DEPOSITS AND BRING THE AREA TO GRADE AND STABILIZE IT AFTER THE CONTRIBUTING DRAINAGE AREA HAS BEEN PROPERLY STABILIZED.

ALL CONSTRUCTION SHALL BE IN ACCORDANCE WITH THE CURRENT CITY OF MANCHESTER ENGINEERING DESIGN AND CONSTRUCTION STANDARDS

PRELIMINARY DRAWING - NOT RELEASED FOR CONSTRUCTION

REVISIONS

NO.	DATE	DESCRIPTION
1		
2		
3		
4		
5		
6		

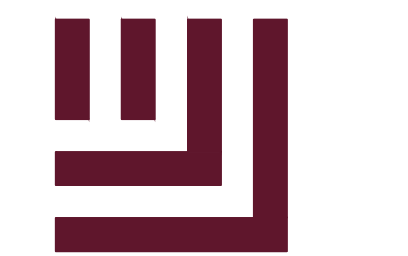
PLAN INFORMATION

PROJECT NO. EX024003
FILENAME EX024003-EC3.DWG
CHECKED BY XXX
DRAWN BY RD
SCALE #####
DATE MAY 23, 2024

SHEET

EROSION CONTROL
DETAILS

C6.01



McADAMS

The John R. McAdams Company, Inc.
621 Hillsborough Street, Suite 500
Raleigh, NC 27603

phone 919. 361. 5000
fax 919. 361. 2269
TN license number: 8829

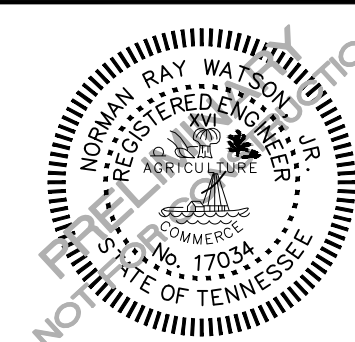
www.mcadamsco.com

CLIENT

EXPRESS OIL CHANGE AND TIRE ENGINEERS
1880 SOUTH PARK DRIVE
BIRMINGHAM, ALABAMA 35244
PHONE: 205. 397. 1164



EXPRESS OIL - MANCHESTER
CONSTRUCTION PLANS
2569 HILLSBOROUGH BOULEVARD
MANCHESTER, TN



EROSION CONTROL LEGEND

- SILT FENCE OUTLET
- INLET PROTECTION
- INLET PROTECTION FOR EXISTING STRUCTURES
- TEMPORARY SLOPE DRAIN
- FILTER BERM
- CHECK DAM
- SILT FENCE
- TREE PROTECTION FENCE
- LIMITS OF DISTURBANCE
- WOODED AREA
- DIVERSION DITCH
- CONSTRUCTION ENTRANCE/EXIT
- CONCRETE WASHOUT

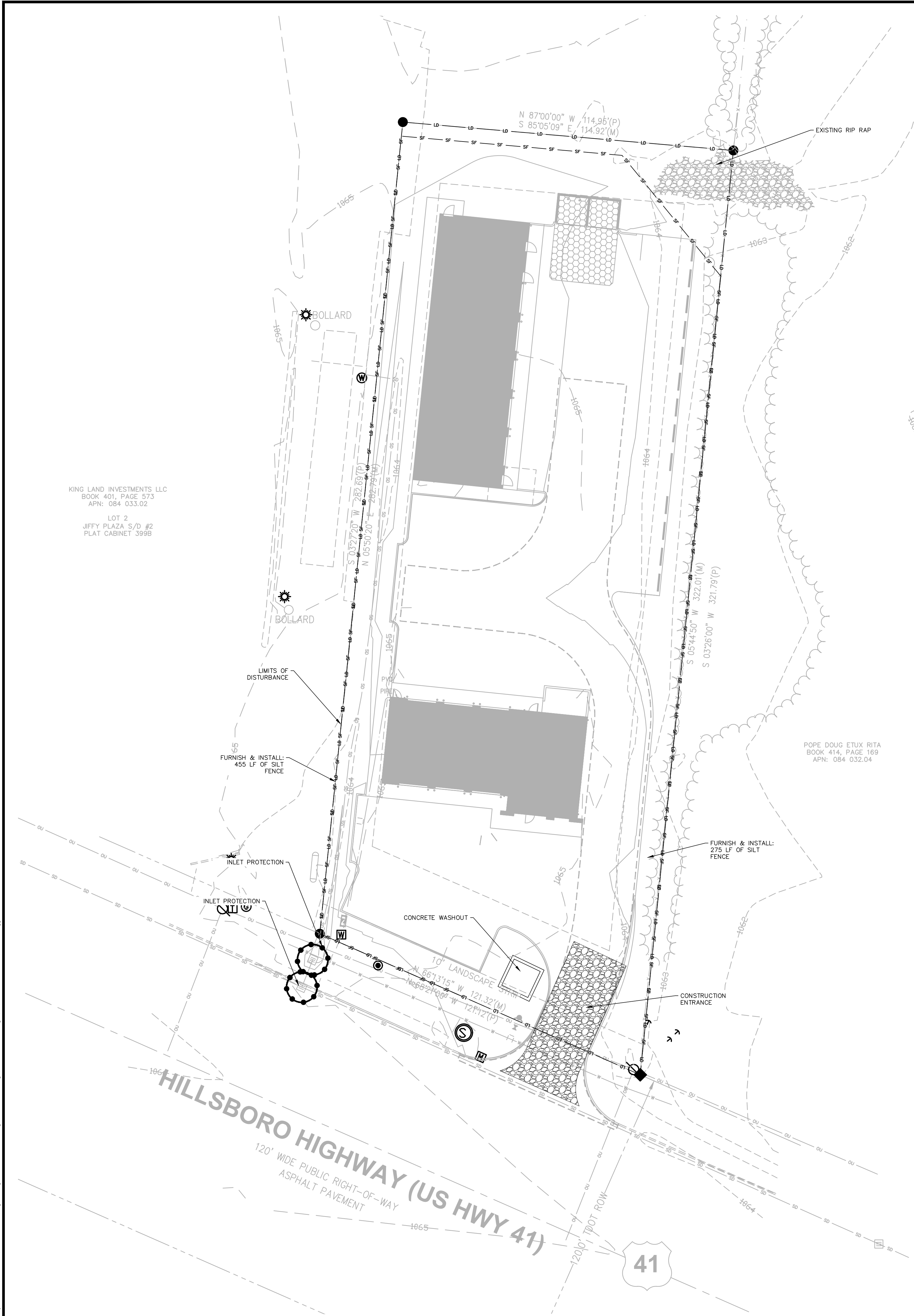
EROSION CONTROL NOTES

1. GRADING AND EROSION CONTROL METHODS SHALL ADHERE TO THE TENNESSEE DEPARTMENT OF ENVIRONMENT AND CONSERVATION (TDEC) STANDARDS AND SPECIFICATIONS.
2. FAILURE TO FOLLOW THE APPROVED PLAN SEQUENCE AND DETAILS COULD SUBJECT THE CONTRACTOR TO FINES AND PENALTIES ISSUED BY EITHER THE MANCHESTER EROSION CONTROL DEPARTMENT OR THE TDEC.
3. CONTRACTOR SHALL SEED AND STABILIZE ALL STEEP SLOPES WITHIN 7 DAYS, 14 DAYS FOR MODERATE SLOPES (3H:1V OR FLATTER).
4. FOR ANY LAND-DISTURBING ACTIVITY WHERE GRADING ACTIVITIES HAVE BEEN COMPLETED, TEMPORARY OR PERMANENT GROUND COVER SUFFICIENT TO RESTRAIN EROSION SHALL BE PROVIDED AS SOON AS PRACTICAL, BUT IN NO CASE LATER THAN SEVEN (7) DAYS AFTER COMPLETING THE WORK. STABILIZATION IS THE BEST FORM OF EROSION CONTROL. TEMPORARY SEEDING IS NECESSARY TO ACHIEVE EROSION CONTROL ON LARGE DENUDED AREAS AND ESPECIALLY WHEN SPECIFICALLY REQUIRED AS PART OF THE CONSTRUCTION SEQUENCE ON THE PLAN.
5. NO DEBRIS SHALL BE TRACKED ONTO PUBLIC RIGHT OF WAY. IF THE SITUATION OCCURS WHERE MUD, ROCK AND DEBRIS IS TRACKED ONTO PAVEMENT, THE CONTRACTOR SHALL CLEAN THE PAVEMENT AND INSTALL ADDITIONAL MEASURES TO PREVENT THE FUTURE OCCURRENCE.
6. THE EROSION CONTROL INSPECTOR MAY REQUIRE ADDITIONAL FIELD MEASURES AS NECESSARY TO PROVIDE ADEQUATE PROTECTION FROM RECEIVING WATER COURSES.
7. EROSION AND SEDIMENT CONTROL DEVICES MUST BE INSTALLED AND INSPECTED PRIOR TO ANY GRADING ON SITE. THE CONTRACTOR SHALL CALL FOR AN INSPECTION BY THE (MUNICIPAL) SEDIMENTATION AND EROSION CONTROL (SEC) ONCE INITIAL MEASURES ARE IN PLACE. (SEE CONSTRUCTION SEQUENCES)
8. CONTRACTOR SHALL INSPECT ALL SEDIMENT / EROSION CONTROL DEVICES AFTER EACH STORM EVENT. EACH DEVICE IS TO BE MAINTAINED OR REPLACED IF SEDIMENT ACCUMULATION HAS REACHED ONE HALF THE CAPACITY OF THE DEVICE.
9. A COPY OF THE APPROVED EROSION CONTROL PLAN MUST BE ON FILE AT THE JOB SITE AT ALL TIMES.
10. CONSTRUCTION, MAINTENANCE, AND REMOVAL OF ALL EROSION CONTROL DEVICES ARE THE RESPONSIBILITY OF THE GRADING CONTRACTOR UNLESS OTHERWISE NOTED.
11. ANY GRADING BEYOND THE DENUDED LIMITS SHOWN ON THE PLAN IS A VIOLATION OF THE CITY EROSION CONTROL ORDINANCE AND IS SUBJECT TO A FINE.
12. ADDITIONAL MEASURES TO CONTROL EROSION AND SEDIMENT MAY BE REQUIRED BY A REPRESENTATIVE OF THE CITY ENGINEERING DEPARTMENT AND ARE THE RESPONSIBILITY OF THE CONTRACTOR.
13. PROTECTION OF EXISTING VEGETATION: AT THE START OF GRADING INVOLVING THE STRIPPING OF TOPSOIL OR LOWERING OF EXISTING GRADE AROUND A TREE, A CLEAN, SHARP, VERTICAL CUT SHALL BE MADE AT THE EDGE OF THE TREE SAVE AREA AT THE SAME TIME AS OTHER EROSION CONTROL MEASURES ARE INSTALLED. THE TREE PROTECTION FENCING SHALL BE INSTALLED ON THE SIDE OF THE CUT FARTHEST AWAY FROM THE TREE TRUNK AND SHALL REMAIN IN PLACE UNTIL ALL CONSTRUCTION IN THE VICINITY OF THE TREES IS COMPLETE. NO STORAGE OF MATERIALS, FILL, OR EQUIPMENT AND NO TRESPASSING SHALL BE ALLOWED WITHIN THE BOUNDARY OF THE PROTECTED AREA AND SHALL BE POSTED ON THE PROTECTION FENCE. A PROTECTION FENCE CONSTRUCTED OF MATERIAL RESISTANT TO DEGRADATION BY SUN, WIND, AND MOISTURE FOR THE DURATION OF THE CONSTRUCTION, SHALL BE INSTALLED AT THE SAME TIME AS THE EROSION CONTROL MEASURES AND SHALL BE IN PLACE UNTIL ALL CONSTRUCTION IN THE VICINITY OF THE TREES IS COMPLETE.
14. A CONSTRUCTION SEQUENCE HAS BEEN PROVIDED. INSTALLATION OF ALL PROPOSED SEDIMENTATION & EROSION CONTROL MEASURES IN THE SEQUENCE(S) PROVIDED AND MAINTENANCE OF THOSE DEVICES IS REQUIRED. THE CONTRACTOR MAY BE ALLOWED, WITH PRIOR APPROVAL FROM THE OWNER, TO COORDINATE CHANGES TO THE PLAN WITH THE ON-SITE SEDIMENTATION & EROSION CONTROL INSPECTOR AND THE ENGINEER.
15. PROVIDE INLET PROTECTION AROUND ALL SITE STORM INLETS. PROTECT OPEN PIPES UNDER CONSTRUCTION WITH EITHER PLYWOOD OR WITH MESH AND GRAVEL WEIRS. RUNOFF SHALL NOT BE ALLOWED IN ANY OPEN TRENCH.
16. CONTRACTOR WILL FIELD LOCATE SILT FENCE OUTLETS AT LOW POINTS IN SILT FENCE AS REQUIRED TO PROVIDE RELIEF FROM CONCENTRATED FLOWS.
17. ALL DIMENSIONS AND GRADES SHOWN ON THE PLANS SHALL BE FIELD VERIFIED BY THE CONTRACTOR PRIOR TO CONSTRUCTION. CONTRACTOR SHALL NOTIFY THE OWNER AND ENGINEER IF ANY DISCREPANCIES EXIST PRIOR TO PROCEEDING WITH CONSTRUCTION FOR NECESSARY PLAN OR GRADE CHANGES. NO EXTRA COMPENSATION SHALL BE PAID TO THE CONTRACTOR FOR ANY WORK DONE DUE TO DIMENSIONS OR GRADES SHOWN INCORRECTLY ON THESE PLANS IF SUCH NOTIFICATION HAS NOT BEEN GIVEN.
18. DISTURBANCE OUTSIDE OF THE SITE PROPERTY LIMITS OR PUBLIC RIGHT-OF-WAY SHALL ONLY BE AS ALLOWED BY SIGNED GRADING AGREEMENTS AND/OR EASEMENTS BETWEEN THE DEVELOPER AND THE OFFSITE PROPERTY OWNER.
19. THE CONTRACTOR IS RESPONSIBLE TO MAINTAIN SAFE OPEN ACCESS TO ALL PROPERTIES ALONG ADJACENT PROPERTIES DURING CONSTRUCTION PERIOD FOR IMPROVEMENTS.
20. MATTING OR SOD ON SLOPES SHALL NOT EXCEED 3:1.
21. MAINTAIN EROSION CONTROL MEASURES TWICE WEEKLY AT INTERVALS AT LEAST 72 HOURS APART AND REPAIR AS NECESSARY. DURING PROLONGED RAINFALL, DAILY CHECKING AND REPAIRING IS NECESSARY.
22. REMOVAL OF ACCUMULATED PAPER, TRASH, AND DEBRIS SHOULD OCCUR WEEKLY OR AS NEEDED TO PREVENT CLOGGING OF CONTROL DEVICES THROUGHOUT THE CONSTRUCTION PROJECT.
23. MAINTENANCE CREWS MAY REQUIRE ACCESS VEHICLES, DUMP TRUCKS, BULLDOZERS, AND DREDGING/EXCAVATION EQUIPMENT. MANUAL USE EQUIPMENT (SUCH AS RAKES, SHOVELS, SICKLES, AND MACHETES) MAY SUFFICE FOR MAINTENANCE OF DRY DETENTION PONDS AND INFILTRATION DEVICE SYSTEMS. STAFFING WILL REQUIRE A MINIMUM OF TWO (2) PERSON CREWS FOR HEALTH AND SAFETY REASONS AND EFFECTIVE STRUCTURAL BMP MAINTENANCE.
24. 90% VEGETATION REQUIRED PER CITY CODE.
25. TOPSOIL SHALL BE STOCKED AND STRATEGICALLY LOCATED THROUGHOUT THE SITE. SILT FENCE SHALL BE TEMPORARILY INSTALLED AROUND ALL STOCKPILES TO PREVENT RUNOFF.

CONSTRUCTION SEQUENCE

1. OBTAIN LAND DISTURBING PERMIT AND PLACARD, AND POST THE PLACARD ON SITE.
2. OBTAIN AN APPROVED (STAMPED) S&E CONTROL PLAN AND KEEP IT ON SITE, EITHER IN THE INSPECTION BOX, CONSTRUCTION OFFICE OR WITH THE CONTRACTOR.
3. SCHEDULE A PRE-CONSTRUCTION MEETING WITH THE MANCHESTER AND OBTAIN A LAND DISTURBANCE PERMIT.
4. INSTALL TREE PROTECTION FENCING ACCORDING TO THE APPROVED EROSION CONTROL PLAN. CALL THE MANCHESTER EROSION CONTROL FOR INSPECTION AND OBTAIN PERMIT.
5. INSTALL CONSTRUCTION ENTRANCE, SILT FENCING, SILT FENCE OUTLETS AND INLET PROTECTION AS SHOWN ON APPROVED STAGE 1 EROSION CONTROL PLAN. GRADE ONLY AS NECESSARY TO INSTALL THESE DEVICES. INSTALL SILT FENCE OUTLETS AT LOW POINTS IN THE SILT FENCING AS NEEDED TO PREVENT BLOWOUTS.
6. IF A STOCKPILE IS NECESSARY DUE TO EXCAVATION OF THE SEDIMENT TRAP/BASIN, PLACE A DOUBLE ROW OF SILT FENCE 10 FEET APART. TREES AND GROUND COVER MAY BE REMOVED ONLY AS NECESSARY FOR THIS STOCKPILE. IF MATERIAL IS GOING TO BE HAULED OFF-SITE, A SEPARATE EROSION CONTROL PERMIT MUST BE OBTAINED FOR THE DESTINATION OF THE MATERIAL.
7. NOTIFY THE MANCHESTER S&E SITE INSPECTOR AFTER MEASURES HAVE BEEN INSTALLED AND PROJECT HAS STARTED.
8. STABILIZE ALL DISTURBED AREAS AND OTHER CRITICAL EROSION CONTROL AREAS IMMEDIATELY UPON INSTALLATION.
9. ONCE APPROVED, BEGIN CLEARING AND GRADING REMAINDER OF THE SITE. MAINTAIN EROSION CONTROL DEVICES AS NEEDED.
10. STABILIZE GRADED AREAS AS THEY ARE CLEARED. TEMPORARILY SEED AND MULCH DENUDED AREAS. ONCE FINAL GRADE HAS BEEN ACHIEVED, PAVE OR PERMANENTLY SEED ALL AREAS AND SLOPES PER THE TENNESSEE EROSION & SEDIMENT CONTROL HANDBOOK, LATEST EDITION (SECTIONS 7.7 TO 7.9 IN 4TH EDITION).
11. MAINTAIN EROSION CONTROL MEASURES WEEKLY AND AFTER EACH RAIN EVENT THROUGHOUT CONSTRUCTION.
12. FILE FOR TDEC NOTICE OF TERMINATION

DISTURBED ACREAGE = 0.80 ACRES

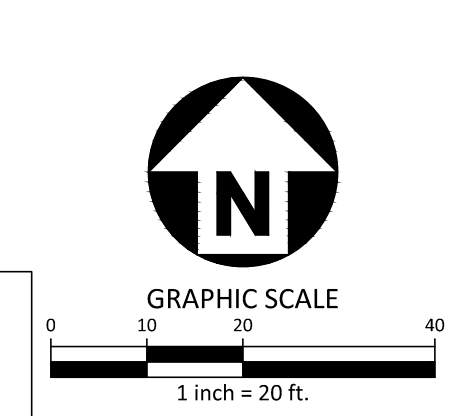


KING LAND INVESTMENTS LLC
BOOK 401, PAGE 573
APN: 084 033.02

LOT 2
JEFFY PLAZA S/D #2
PLAT CABINET 3999

POPE DOUG ETUX RITA
BOOK 414, PAGE 169
APN: 084 032.04

ALL CONSTRUCTION SHALL BE IN ACCORDANCE WITH THE CURRENT CITY OF MANCHESTER ENGINEERING DESIGN AND CONSTRUCTION STANDARDS



PRELIMINARY DRAWING - NOT RELEASED FOR CONSTRUCTION

REVISIONS

NO.	DATE	DESCRIPTION
1		
2		
3		
4		
5		
6		

PLAN INFORMATION

PROJECT NO. EX024003
 FILENAME EX024003-EC1.DWG
 CHECKED BY TL
 DRAWN BY RP
 SCALE 1" = 20'
 DATE MAY 23, 2024

SHEET

EROSION CONTROL PLAN
C6.00

M:\Projects\EX024003\Production\Engineering\Construction Drawings\Current Drawings\EX024003-EC1.dwg, 5/23/2024, 10:55:09 AM, Robert Paige